

***“Never doubt that a small group of thoughtful, caring, committed people can change the world; indeed, it is the only thing that ever has.”***

***- Margaret Mead***



The ESA Foundation’s “Scholarship Brochure” series honors those who have provided, or are honored by an endowed scholarship. This series provides a link between the student recipients and this prestigious group – who are committed to positive change for the world.

The ESA Foundation is a 501(c)3 public foundation established in 1970 and recognized by the Internal Revenue Service as an organization exclusively for charitable and educational purposes. It is a non-profit and tax-exempt organization pledged to the development of philanthropic activities of volunteers, providing assistance to established programs that serve human needs. The ESA Foundation envisions a future world community working together to assist those in need, educating those who seek to learn, and assisting those who strive to improve the quality of their lives or the lives of others.

[ESA International is an organization founded in 1929 and is a premier leadership and service organization bringing volunteers together to pursue programs and projects that make a positive difference to the world community. It is dedicated to developing confidence, competence, and career opportunities for the members. ESA promotes education, service, and association through programs focused on personal development and leadership training.]

**ESA Foundation**  
P.O. Box 270517  
Ft. Collins, CO 80527

970-223-2824  
fax - 970-223-4456

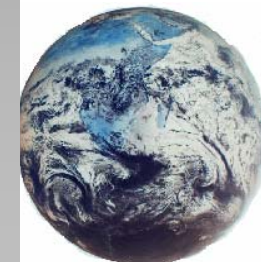
**[www.esaintl.com/esaf](http://www.esaintl.com/esaf)**

## **ESA Foundation**

***“Serving the World Community  
... Because We Care”***

### **PARR FAMILY**

### **MEMORIAL ENDOWMENT/**



## **PARR FAMILY MEMORIAL ENDOWMENT**

Judging Criteria “F” – (100 points)

Weighted to Financial Need  
and Service.

10 pts – Character

10 pts – Leadership

35 pts – Service

35 pts – Financial Need

10 pts – Scholastic Ability

Specific Criteria: any “C” average

student in the 2.50 – 3.00 gpa;

any major; must be a resident of  
Illinois, Indiana, Iowa, Michigan,

Minnesota, Missouri, Nebraska,

Ohio, Wisconsin, or South Dakota.

Written by Mary Parr

The Parr Family Memorial Endowment was established by Mary Parr in July, 2002, after the death of her husband, Bob. A son, Alan Parr, and parents, Harold and Ardis Parr, preceded him in death. The Parr family is known as a family of educators. Bob, his mother, his Aunt Mary, and both daughters, Kate and Liz were or are teachers. Mary thought it only fitting to carry on the tradition by helping worthy students to further their education.

Mary has been an ESA member for over 50 years having joined in 1958 in Madison, Wisconsin. At the time, Mother-in-law, Ardis, was dean of the local business college, which was a source of members for the ESA Beta Zeta Chapter. In 1958, there weren't many

opportunities for women to join organizations and develop leadership skills.

Mary has since moved to St. Paul, MN and affiliated with the alpha Lambda Chapter, which at that time had 22 members. Mary has served her chapter in all offices and committees and was the Minnesota State President in 1986-87.

Mary states that joining ESA is one of the best things she ever did and has made many lasting friendships over the years. She is a Life member of both the Epsilon Sigma Alpha International and the ESA Foundation. Her daughter, Kate, is also a member of ESA. It was an honor for May to install her daughter as the 2007-08 Minnesota State President.

The Parr Family Memorial Endowment is focused more on financial need rather than scholastic ability. Mary established this endowment to help those students who want to further their education, but do not qualify for much, if any aid.

Since education played such an important part in the lives of so many in the Parr family, it is Mary's hope the family will continue to see that the Endowment continues to be funded.

The Minnesota State Council is a long supporter of the work and scholarship program of the ESA Foundation and the general scholarships of the program.

---

The ESA Foundation Scholarship program began in 1977. Over 100 scholarships are awarded annually to students across the United States and Internationally who meet the criteria of the individual endowment scholarships.

The Scholarship program operates through volunteer services with the exception of the audit performed by Sample & Bailey CPA, PC, Ft. Collins, Colorado.

Applications are reviewed and processed by the State Counselor and a Regional Scholarship Committee, with a final review by the Scholarship Coordinators who submit them for final judging to judges throughout the United States who are selected from education and business professionals, who are not members of the ESA Foundation.

---